



Hardware Installation

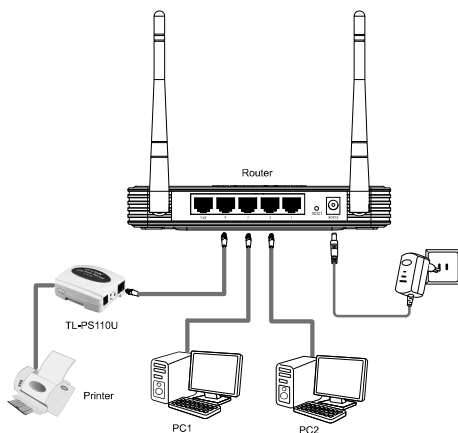
Note The product model shown in this QIG is TL-PS110U, as an example.

Before you start, you should prepare the following items

- Windows 2000/XP/2003/Vista/7 computer with print server setup CD
- One Printer
- One Printer cable
- One Router

Hardware Installation

1. Turn off the printer's power.
2. Connect the print server to your printer with the supplied printer cable. Connect the print server to your Router with the RJ45 cable. The image beside is the classic infrastructure topology for reference:



3. Turn the printer's power on.
4. Plug the AC power adapter into the power connector on the print server.
5. Wait 40 seconds as part of the print server's Power On Self Test (POST).

Factory Default Settings

- Username: admin
- IP Address: 192.168.0.10
- Subnet Mask: 255.255.255.0

Note The TL-PS110U is produced without password by default.

Software Installation

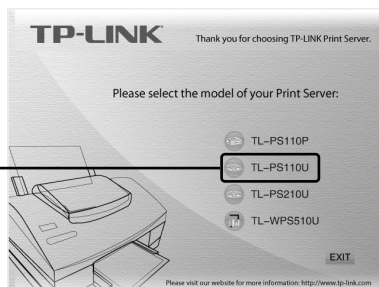
1

Configuring the Printer Server

1 Select the Print Server

Insert the provided CD into your computer's CD drive, the Setup Wizard will automatically pop up on your computer's screen.

Select **TL-PS110U**



Note If you don't have a CD-ROM, you can click to our web site (<http://www.tp-link.com/support/download.asp>) and download the PrintServer_Setup_Wizard.

Click **Setup Wizard**

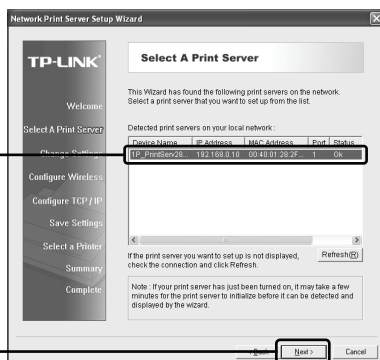




Click **Next**

On the **Select A Print Server** screen, TL-PS110U will be detected as "1P_PrintServXXX".

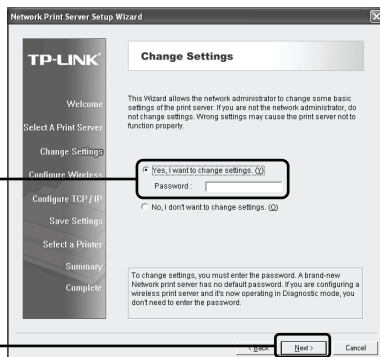
Select the print server



Click **Next**

2 Configure the Print Server

Please select **Yes**. Leave the Password **blank**



Click **Next**

Assign a static IP to your Print Server. The IP should be within the same subnet of your Router

Click **Next**

Note The IP address of the print server must be within **the same subnet** with your Router, for example:

| Network device | IP address |
|----------------|--------------|
| Router/Gateway | 192.168.1.1 |
| Print server | 192.168.1.10 |

Note Remember the IP address of the Print Server, because you may log into the Print Server by this IP next time.

Confirm the settings

Click **Next**

PSWizard is saving the configurations to the print server

Click **Next**

Network Print Server Setup Wizard

TP-LINK®

Welcome

Select A Print Server

Change Settings

Configure Wireless

Configure TCP/IP

Save Settings

Select a Printer

Summary

Complete

Confirm Settings

Current Settings :

| | |
|---------------------|---------------------|
| Print Server Name : | 1P_PrintServer22453 |
| MAC Address : | 00:1D:0F:F2:24:53 |
| DHCP : | Disable |
| IP Address : | 192.168.1.10 |
| Subnet Mask : | 255.255.255.0 |
| Gateway : | 192.168.1.1 |

Saving the settings to the print server...

< Back **Next >** Cancel

2

Configuring the Printer

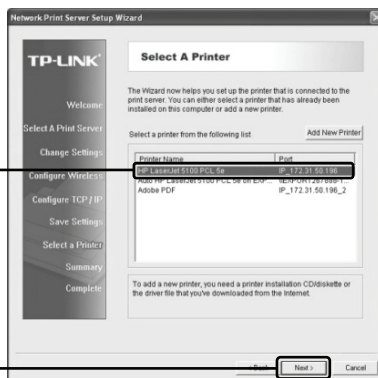
This page will then display.

If your printer has already appeared in the Printer Name list, please follow the **instruction 1**. Otherwise please follow the **instruction 2**.



1

Select an existing printer by the printer name

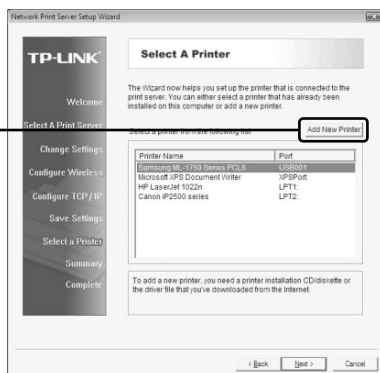


Click **Next**, and then follow the step by step instructions to complete the installation

You have now installed the print server and the printer successfully. You can print through the network.

Note The print server needs to be configured only once, other users who want to share the printer only need to install the printer's driver and configure the TCP/IP port on their computers. Please refer to the User Guide on the resource CD.

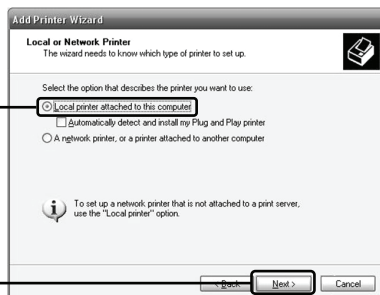
Click Add New Printer



Click Next



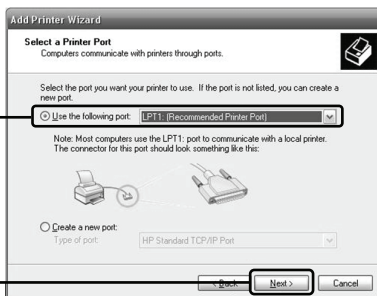
Select Local printer attached to this computer



Click Next

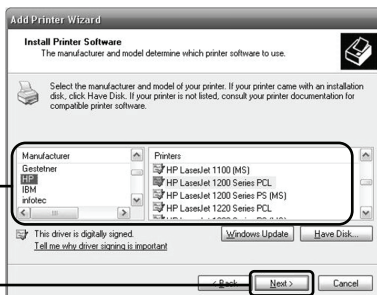
Tick **Use the following port and select LPT1: (Recommended Printer Port)** from the pull-down list

Click **Next**



Select the manufacturer and model of your printer

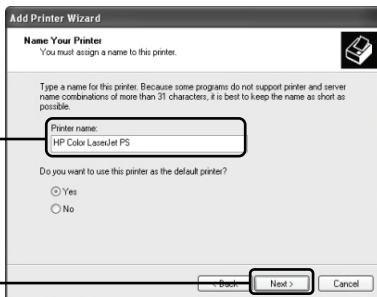
Click **Next**

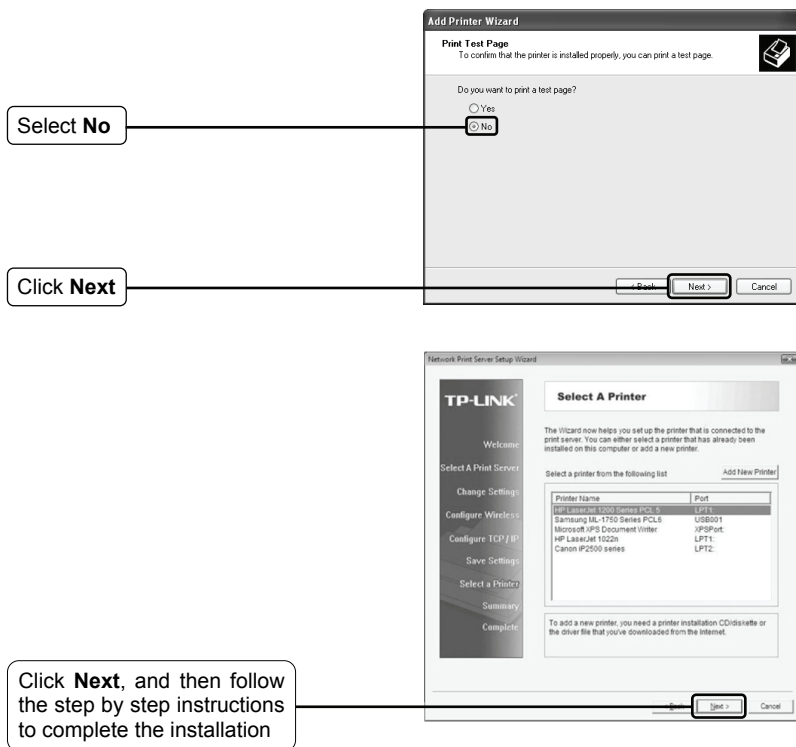


Note If you already have the printer's driver installed, you will be asked whether to keep or replace it. Please select replace it.

Enter a name for your printer

Click **Next**





You have now installed the print server and the printer successfully. You can print through the network.

Note The print server needs to be configured only once, other users who want to share the printer only need to install the driver of the printer and configure the TCP/IP port on their computers. Please refer to the User Guide on the resource CD.

Technical Support

- For more troubleshooting help, go to:
www.tp-link.com/support/faq.asp
- To download the latest Firmware, Driver, Utility and User Guide, go to:
www.tp-link.com/support/download.asp
- For all other technical support, please contact us by using the following details:

Global

Tel: +86 755 26504400

E-mail: support@tp-link.com

Service time: 24hrs, 7days a week

Singapore

Tel: +65 62840493

E-mail: support.sg@tp-link.com

Service time: 24hrs, 7days a week

UK

Tel: +44 (0) 845 147 0017

E-mail: support.uk@tp-link.com

Service time: 24hrs, 7days a week

Switzerland

Tel: +41 (0)848 800998 (German service)

E-mail: support.ch@tp-link.com

Fee: 4-8 Rp/min, depending on rate of different time

Service Time: Monday to Friday

9:00 AM to 6:00 PM. GMT+1 or

GMT+2 (Daylight Saving Time)

Australia & New Zealand

Tel: AU 1300 87 5465

NZ 0800 87 5465

E-mail: support@tp-link.com.au

Service time: Monday to Friday

9:00 AM to 9:00 PM AEST

USA/Canada

Toll Free: +1 866 225 8139

E-mail: support.usa@tp-link.com

Service time: 24hrs, 7days a week

Germany/Austria

Tel: +49 1805 875465 (German Service) / +49 1805 TPLINK

E-mail: support.de@tp-link.com

Fee: 0.14 EUR/min from the German fixed phone network and up to 0.42 EUR/min from mobile phone.

Service Time: Monday to Friday

9:00 AM to 6:00 PM. GMT+1 or

GMT+2 (Daylight Saving Time in

Germany)

* Except bank holidays in Hesse